



The Naples XXV

with Double Garage

Elevation C-HDR-1

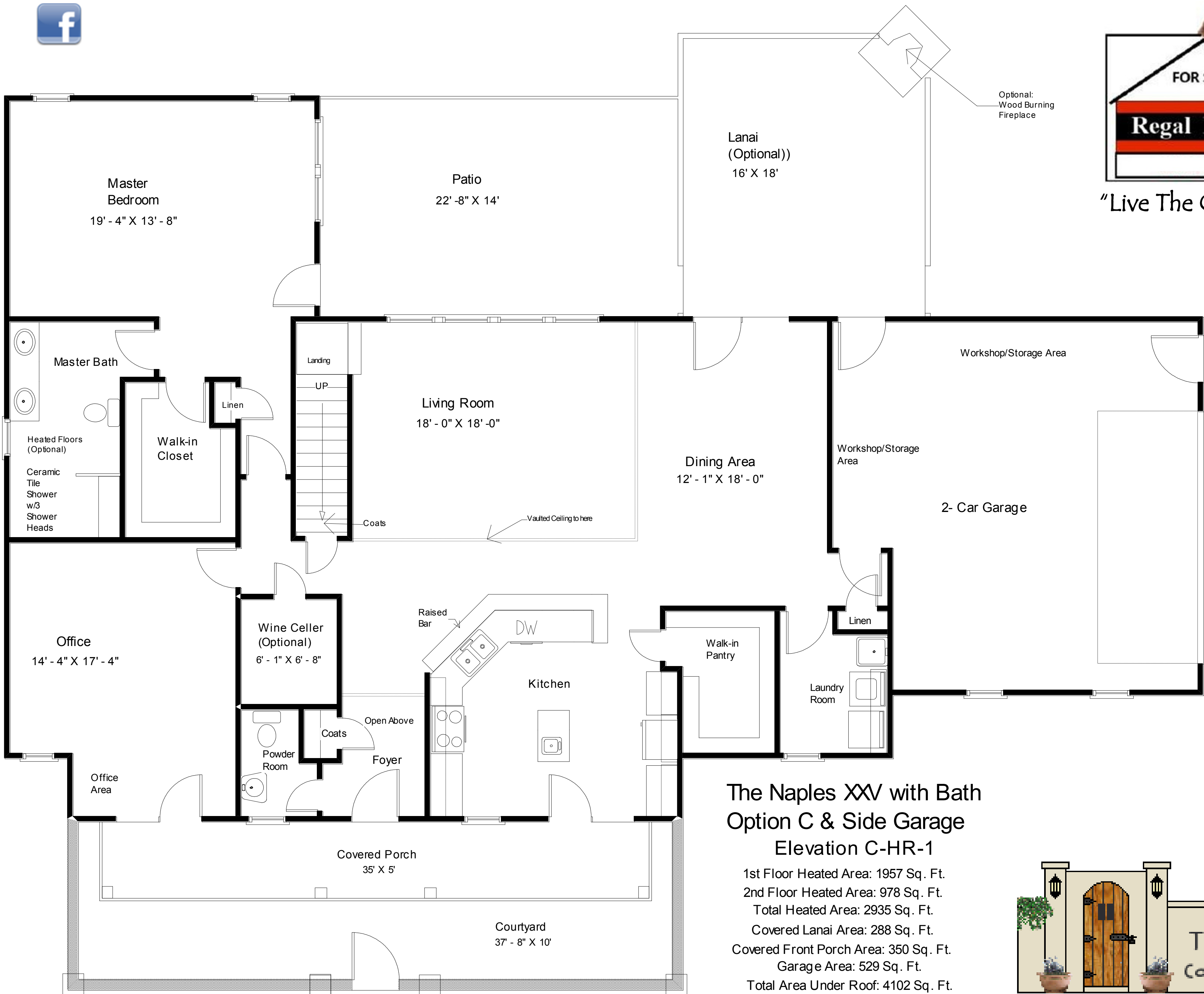


"Live The Great Life"





"Live The Great Life"



Optional:
Wood Burning
Fireplace

Lanai
(Optional)
16' X 18'

Patio
22' - 8" X 14'

Master
Bedroom
19' - 4" X 13' - 8"

Master Bath

Heated Floors
(Optional)
Ceramic
Tile
Shower
w/3
Shower
Heads

Walk-in
Closet

Linen

Landing

UP

Living Room
18' - 0" X 18' - 0"

Coats

Vaulted Ceiling to here

Dining Area
12' - 1" X 18' - 0"

Workshop/Storage
Area

Workshop/Storage Area

2- Car Garage

Office
14' - 4" X 17' - 4"

Wine Celler
(Optional)
6' - 1" X 6' - 8"

Raised
Bar

Kitchen

Walk-in
Pantry

Linen

Laundry
Room

Powder
Room

Coats

Open Above

Foyer

Office
Area

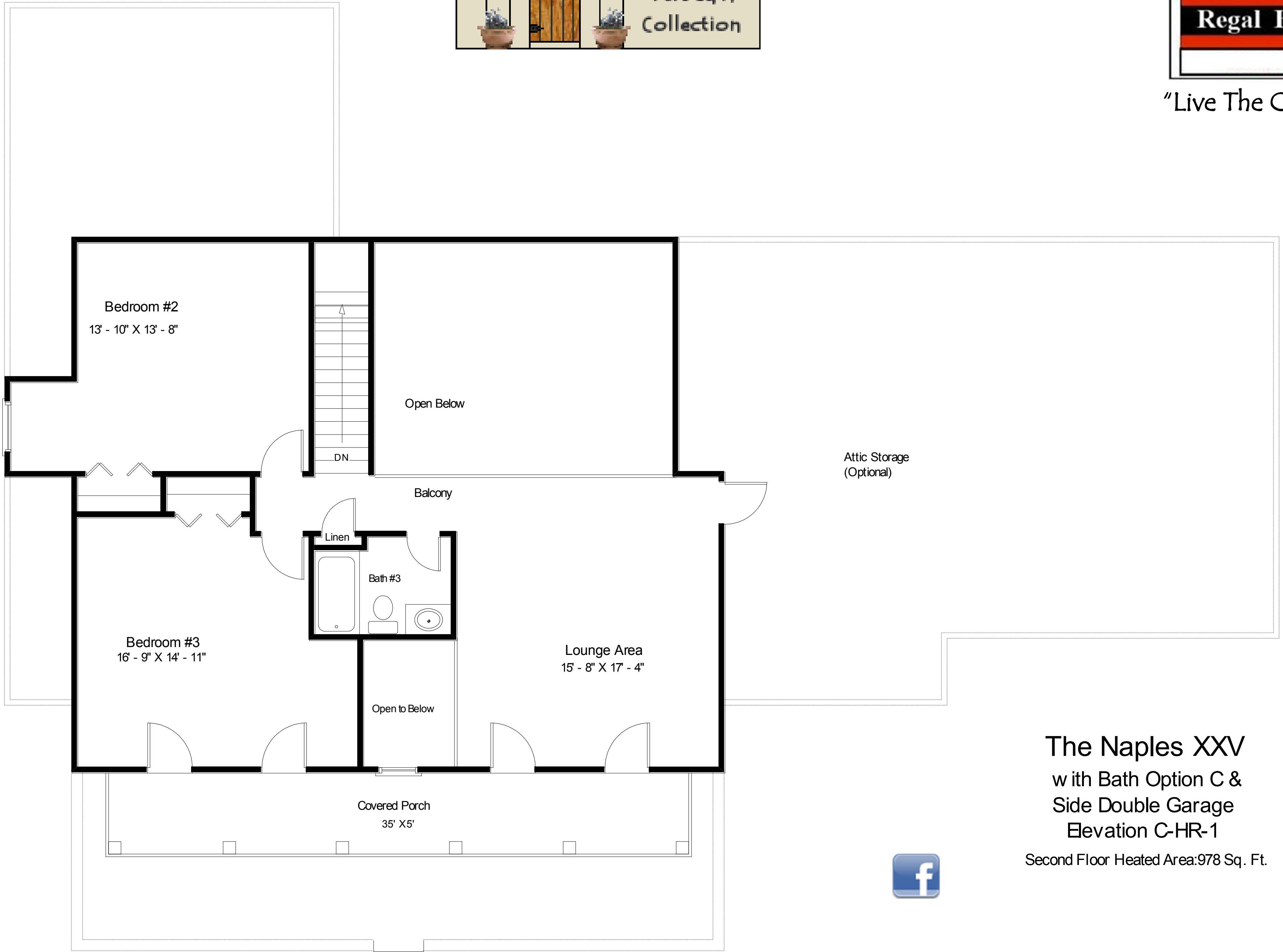
Covered Porch
35' X 5'

Courtyard
37' - 8" X 10'

The Naples XXV with Bath Option C & Side Garage Elevation C-HR-1

- 1st Floor Heated Area: 1957 Sq. Ft.
- 2nd Floor Heated Area: 978 Sq. Ft.
- Total Heated Area: 2935 Sq. Ft.
- Covered Lanai Area: 288 Sq. Ft.
- Covered Front Porch Area: 350 Sq. Ft.
- Garage Area: 529 Sq. Ft.
- Total Area Under Roof: 4102 Sq. Ft.





The Naples XXV
with Bath Option C &
Side Double Garage
Elevation C-HR-1
Second Floor Heated Area: 978 Sq. Ft.

